

mahlum



Viewlands Elementary School

School Traffic Safety Committee

10 April 2020

Agenda

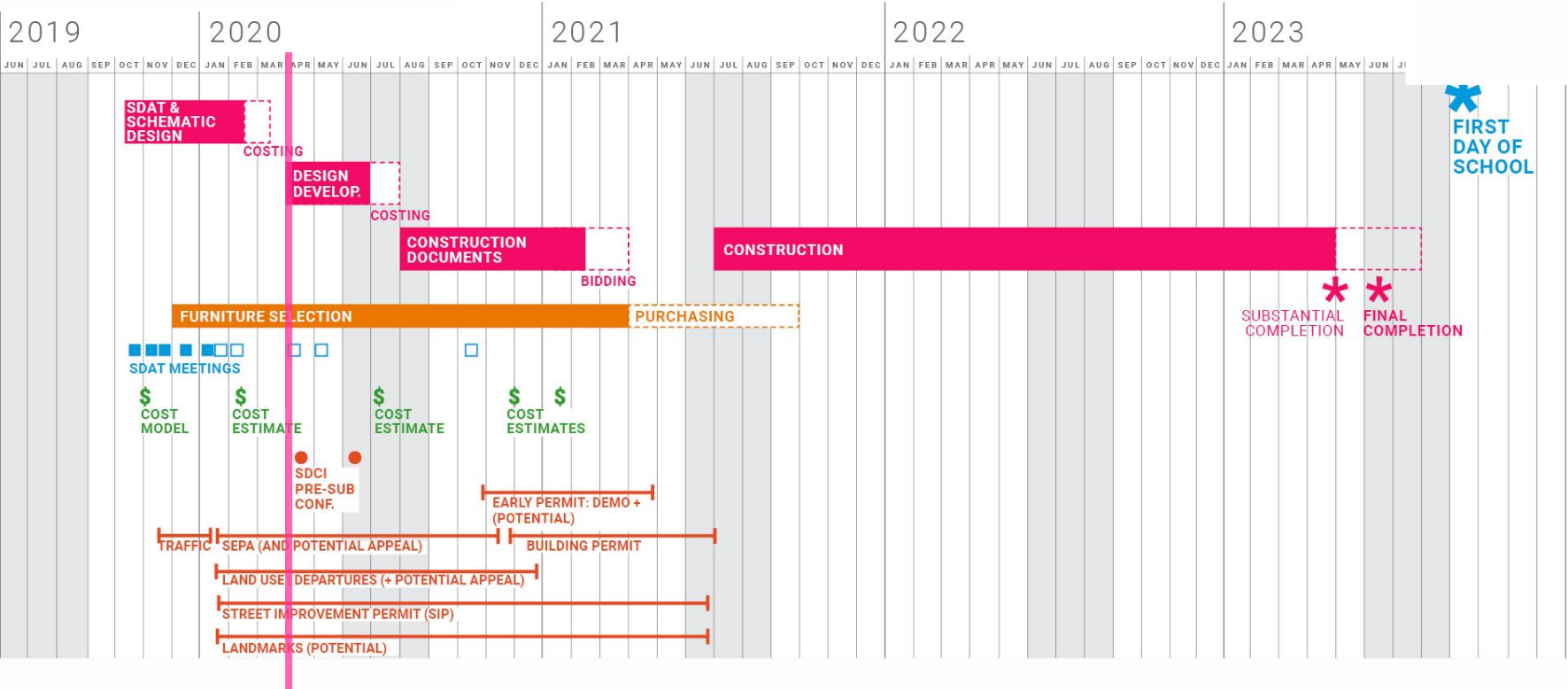
Schedule

Project Goals

Building and Site Development

Questions/Discussion

Project Schedule





Project Goals

Strategic Plan

Green Resolution

Top “10” Goals

1. Viewlands will be infused with nature, outdoor learning, and natural light
Viewlands welcomes ALL!
2. The design will be accessible to students, staff, community and culture
3. Viewlands will have collaborative, flexible spaces throughout (that are not vanilla)
4. Viewlands has a big Heart: a large, welcoming space for celebrations with a soft feel
- 4 ½. Viewlands has many gathering spaces that foster relationships with community partners
5. We are connected to the history of place
6. Our Building Hugs the Children!



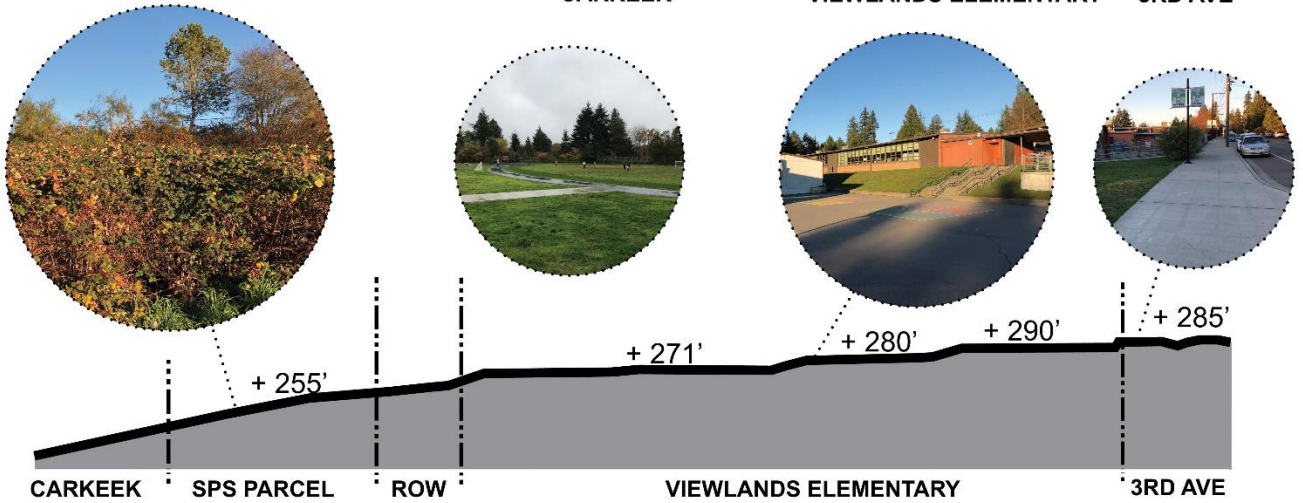
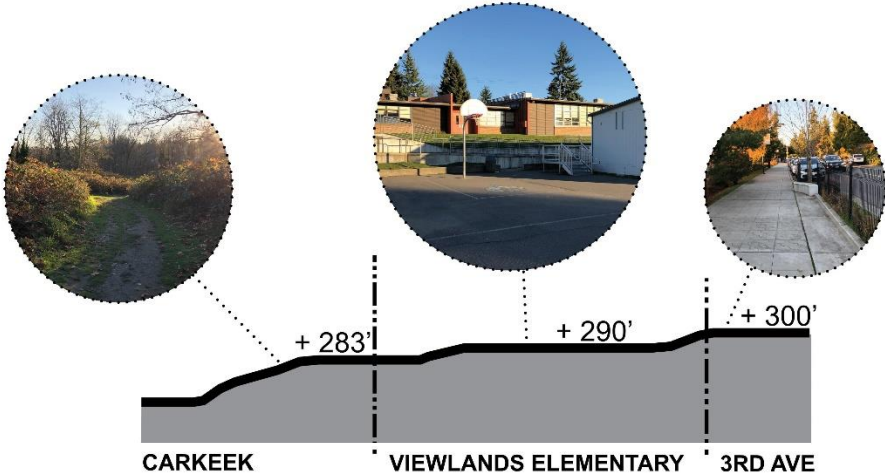
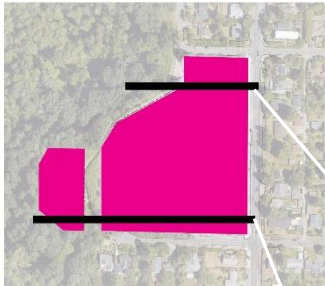
Site & Building Development



Piper's Creek Watershed



Site Sections

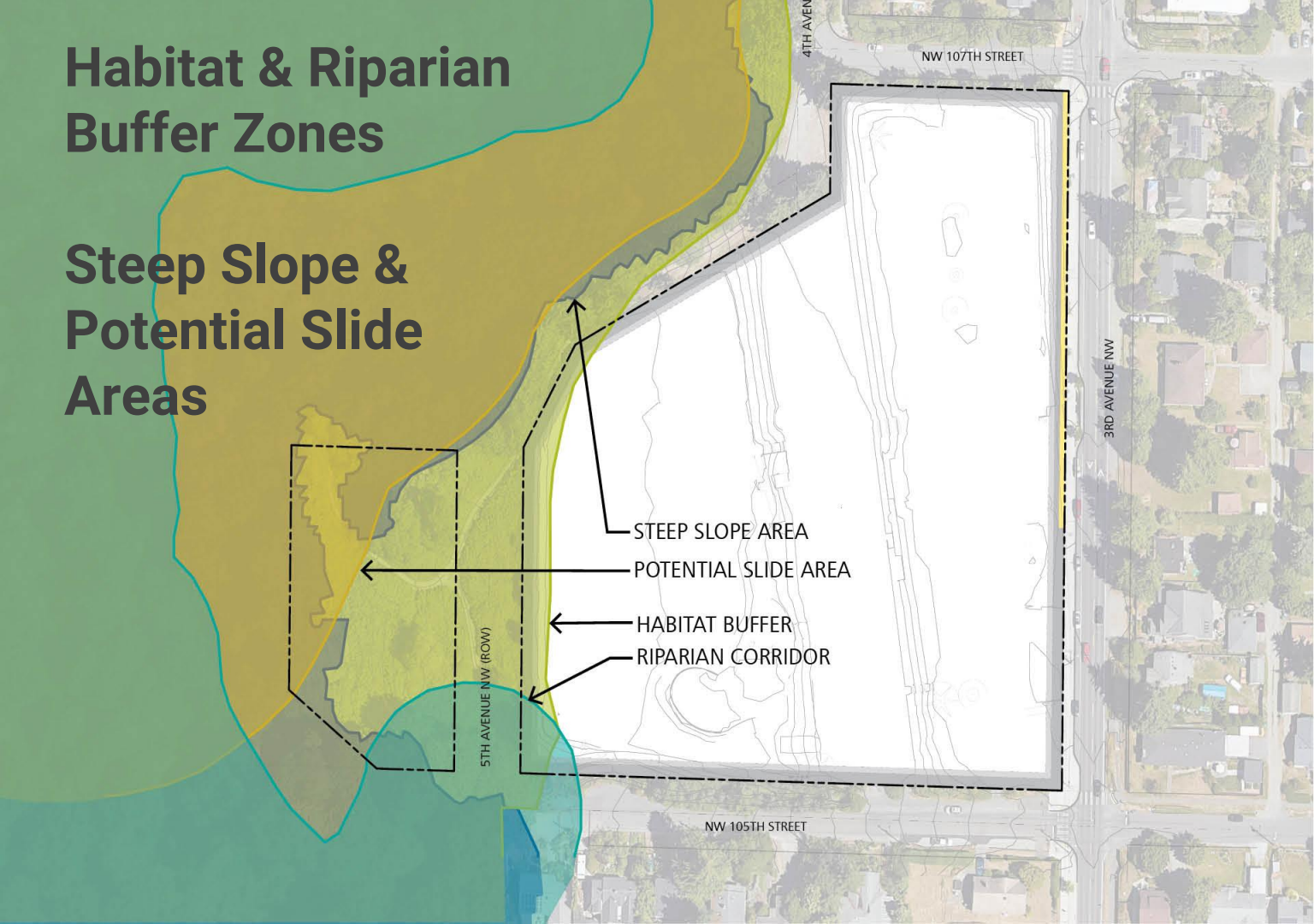


Site Topography



Habitat & Riparian Buffer Zones

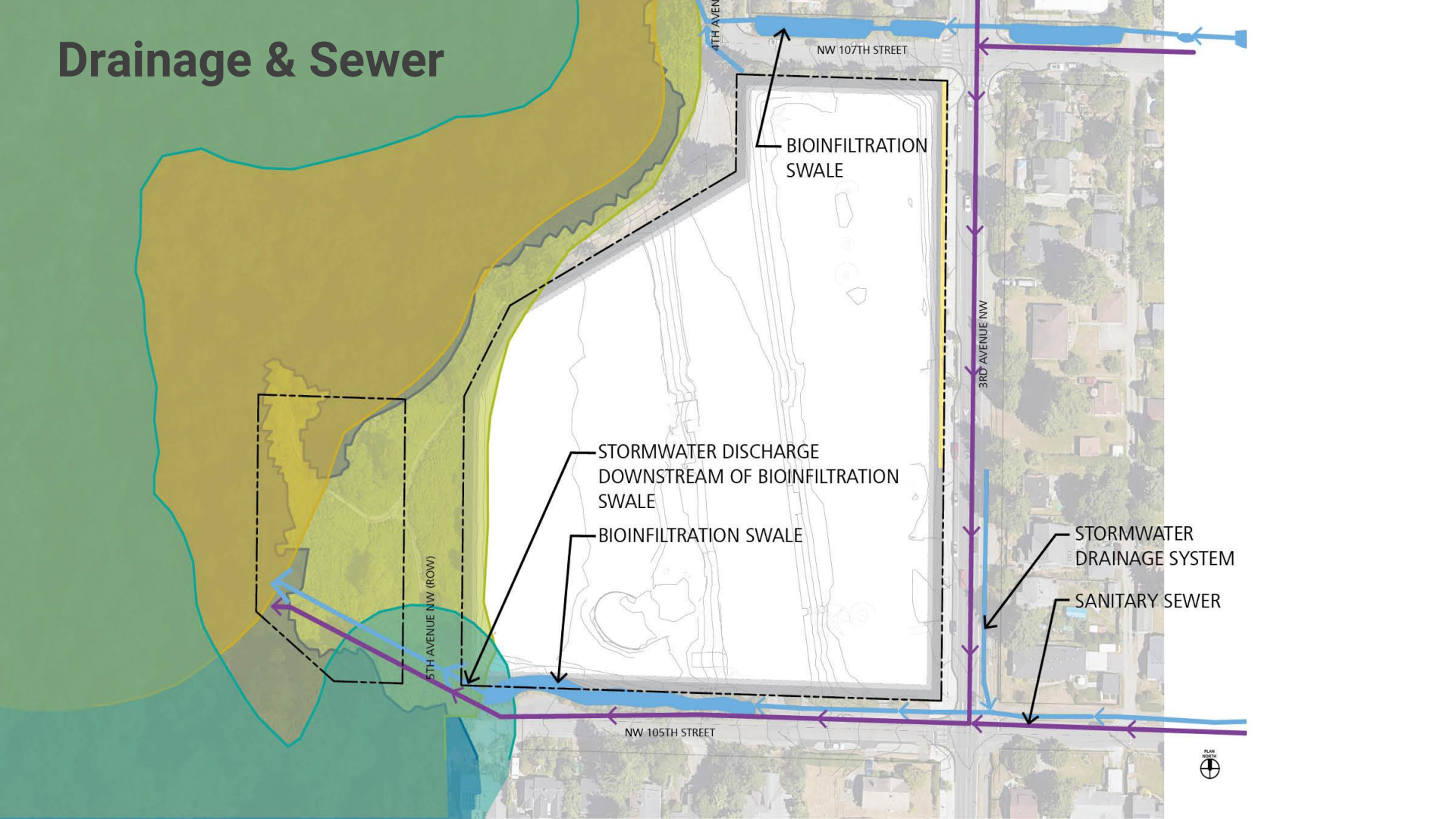
Steep Slope & Potential Slide Areas



- STEEP SLOPE AREA
- POTENTIAL SLIDE AREA
- HABITAT BUFFER
- RIPARIAN CORRIDOR



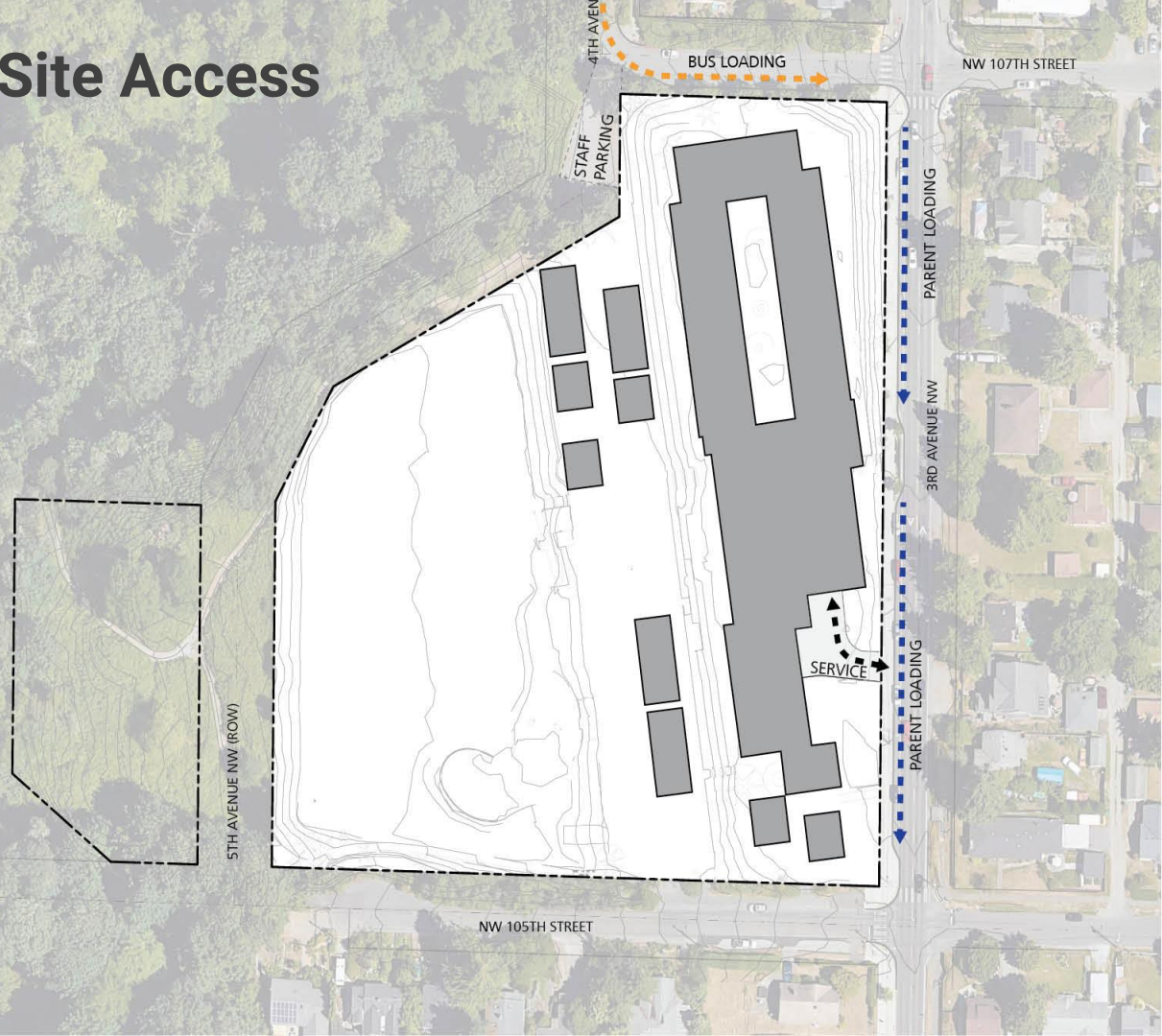
Drainage & Sewer



Exceptional Trees



Existing Site Access



School Design
Advisory Team
(SDAT):
Site Feedback



Existing Bus Loading Area

NW 107TH Street

(Looking East)



Existing Parent Dropoff

3rd Avenue NW

(Looking South)



Viewlands Cascade NW 105TH Street



Early Site Response Options

Site Strategies



Preferred Site Organization: Build South & Enter Central



Schematic Design Site Plan

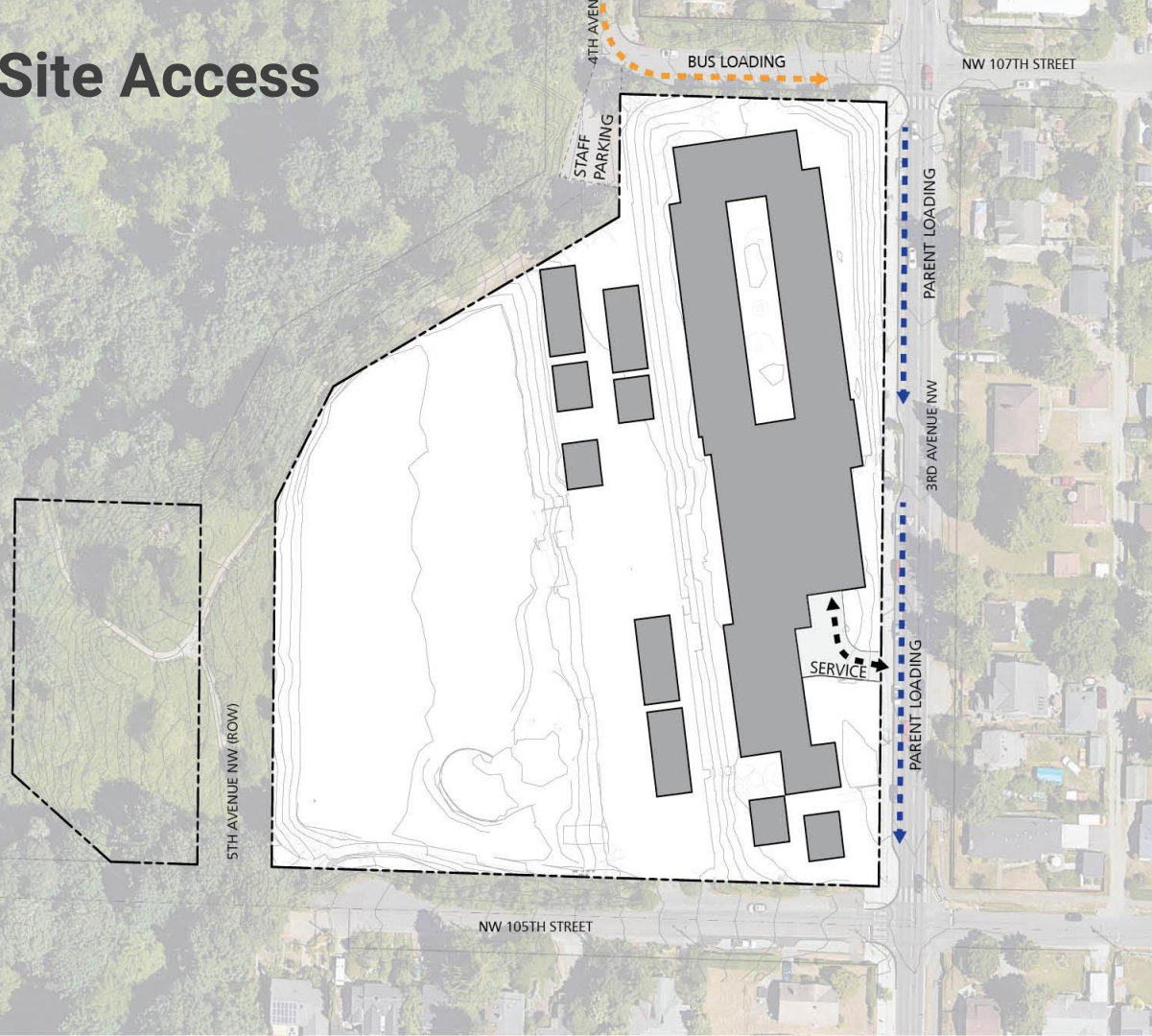


Proposed Site Access



Questions/Discussion

Existing Site Access



Proposed Site Access

